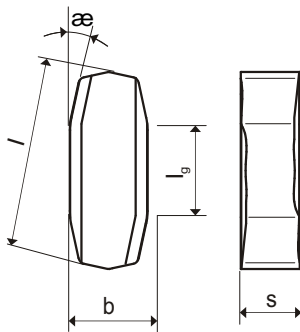


SCHÄLWERKZEUGE BAR PEELING TOOLS

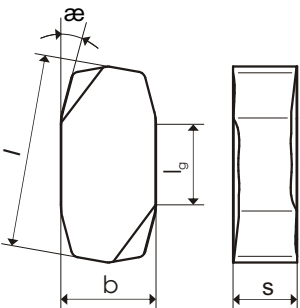
... made by TRIBO

	Seite / page
Schneidplatten Form LN... Inserts Form LN...	3 - 5
Schneidplatten Form UN... Inserts Form UN...	5
Schneidplatten Form XN... Inserts Form XN...	5
Schneidplatten Form NN... Inserts Form NN...	6
Schneidplatten Form HN... Inserts Form HN...	6-7,10
Schneidplatten Form RN... Inserts Form RN...	10
Schneidplatten Form SN... Inserts Form SN...	11
Schneidplatten Form TN... Inserts Form TN...	11
Schneidplatten Form WN... Inserts Form WN...	11-12
Schneidplatten Form YN... Inserts Form YN...	12
Schneidplatten Form SC... Inserts Form SC...	12
Schneidplatten Form SP... Inserts Form SP...	12
Bezeichnung der Schneidplatten Designation of Inserts	13
Hartmetallsorten Carbide grades	14
Zihschälstein-Einsätze Wire shaving tools	15



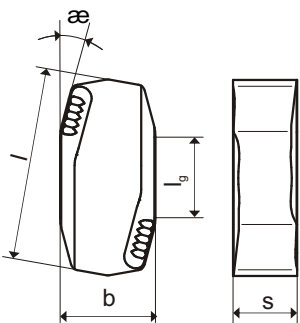
LNGF 30/36...

	mm	l	l _g	b	s	æ	max. a _p
LNGF 3008		30,12	17,5	12,00	7,5	20°	2,0
LNGF 3612		36,50	15,0	18,00	12,0	15°	2,0
	inch	l	l _g	b	s	æ	max. a _p
LNGF 3008		1.1858	0.6890	0.4724	0.2953	20°	0.0591
LNGF 3612		1.4370	0.5906	0.7087	0.4724	15°	0.0787



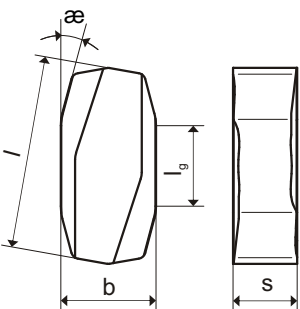
LNGN 36...

	mm	l	l _g	b	s	æ	max. a _p
LNGN 3608		36,50	15,0	18,00	8,0	15°	2,0
LNGN 3612		36,50	15,0	18,00	12,0	15°	2,0
	inch	l	l _g	b	s	æ	max. a _p
LNGN 3608		1.4370	0.5906	0.7087	0.3150	15°	0.0787
LNGN 3612		1.4370	0.5906	0.7087	0.4724	15°	0.0787



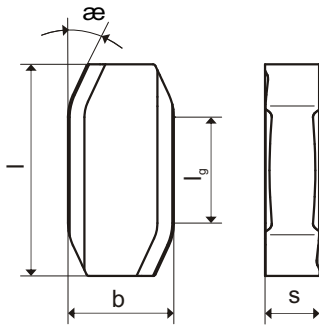
LNGY 36...

	mm	l	l _g	b	s	æ	max. a _p
LNGY 3608		36,50	15,0	18,00	8,0	15°	2,0
LNGY 3612		36,50	15,0	18,00	12,0	15°	2,0
	inch	l	l _g	b	s	æ	max. a _p
LNGY 3608		1.4370	0.5906	0.7087	0.3150	15°	0.0787
LNGY 3612		1.4370	0.5906	0.7087	0.4724	15°	0.0787



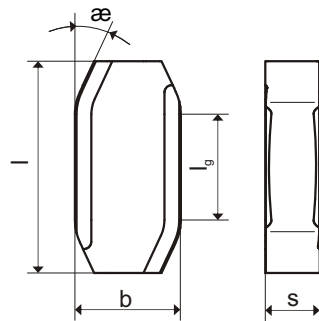
LNGX 36...

	mm	l	l _g	b	s	æ	max. a _p
LNGX 3608		36,50	15,0	18,00	8,0	15°	2,0
LNGX 3612		36,50	15,0	18,00	12,0	15°	2,0
	inch	l	l _g	b	s	æ	max. a _p
LNGX 3608		1.4370	0.5906	0.7087	0.3150	15°	0.0787
LNGX 3612		1.4370	0.5906	0.7087	0.4724	15°	0.0787



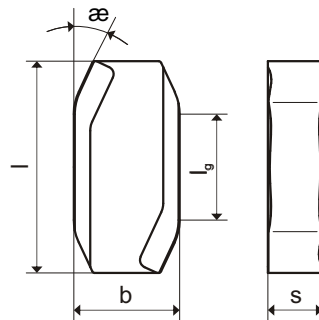
LNGF 40...

mm	l	l _g	b	s	æ	max. a _p
LNGF 4010	40,00	20,0	20,00	10,0	25°	3,5
LNGF 4010	40,00	20,0	20,00	12,0	25°	3,5
inch	l	l _g	b	s	æ	max. a _p
LNGF 4010	1.5748	0.7874	0.7874	0.3937	25°	0.1181
LNGF 4010	1.5748	0.7874	0.7874	0.4724	25°	0.1181



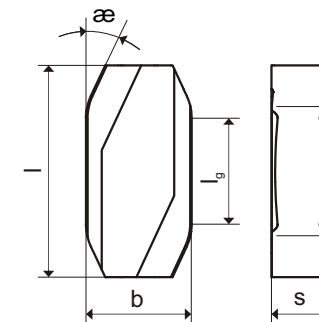
LNGS 40...

mm	l	l _g	b	s	æ	max. a _p
LNGS 4010	40,00	20,0	20,00	10,0	25°	3,5
inch	l	l _g	b	s	æ	max. a _p
LNGS 4010	1.5748	0.7874	0.7874	0.3937	25°	0.1181



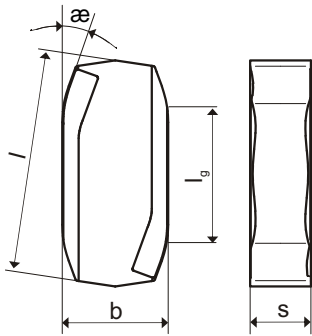
LNGY 40...

mm	l	l _g	b	s	æ	max. a _p
LNGY 4010	40,00	20,0	20,00	10,0	25°	3,5
LNGY 4012	40,00	20,0	20,00	12,0	25°	3,5
inch	l	l _g	b	s	æ	max. a _p
LNGY 4010	1.5748	0.7874	0.7874	0.3937	25°	0.1181
LNGY 4012	1.5748	0.7874	0.7874	0.4724	25°	0.1181



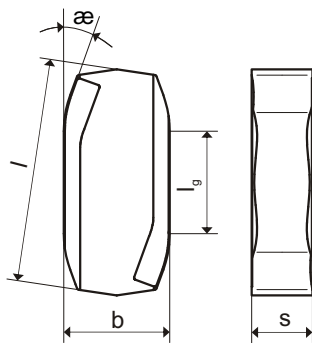
LNGX 40...

mm	l	l _g	b	s	æ	max. a _p
LNGX 4010	40,00	20,0	20,00	10,0	25°	4,0
inch	l	l _g	b	s	æ	max. a _p
LNGX 4010	1.5748	0.7874	0.7874	0.3937	25°	0.1574



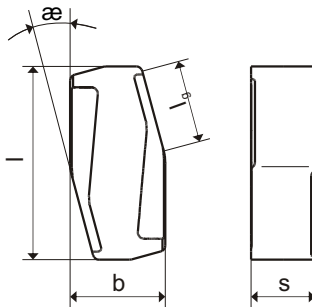
LNGY 43...

mm	l	l _g	b	s	æ	max. a _p
LNGY 4312	43,0	25,0	12,0	18,0	20°	2,2
inch	l	l _g	b	s	æ	max. a _p
LNGY 4312	1.6929	0.984	0.4724	0.7087	20°	0.0866



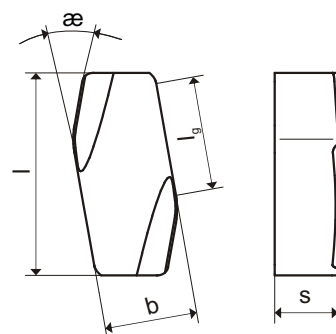
LNGZ 42...

mm	l	l _g	b	s	æ	max. a _p
LNGZ 4211	80,00	19,0	20,00	11,0	20°	2,0
inch	l	l _g	b	s	æ	max. a _p
LNGZ 4211	1.6634	0.7480	0.7874	0.4331	20°	0.0787



UNGF 37...

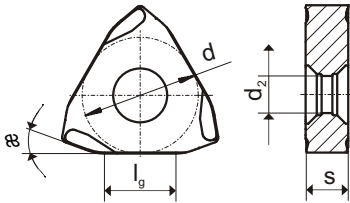
mm	l	l _g	b	s	æ	max. a _p
UNGF 3712	36,50	17,0	18,00	12,0	15°	4,0
inch	l	l _g	b	s	æ	max. a _p
UNGF 3712	1.4370	0.6102	0.7087	0.4724	15°	0.1575



XNGX 17...

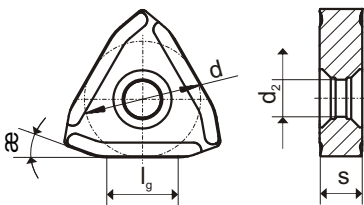
mm	l	l _g	b	s	æ	max. a _p
XNGX 171138	38,25	21,0	17,50	12,0	20°	4,0
inch	l	l _g	b	s	æ	max. a _p
XNGX 171138	1.5059	0.8268	0.6890	0.4724	20°	0.1575

NNGC 28...



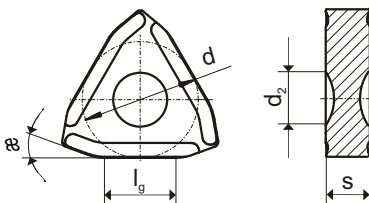
mm	d	l _g	s	d ₂	æ	max. a _p
NNGC 2810	28,58	20,0	10,0	7,0	20°	3,0
inch	d	l _g	s	d ₂	æ	max. a _p
NNGC 2810	1.1252	0.7087	0.3937	0.2756	20°	0.0591

NNGJ 22/28...



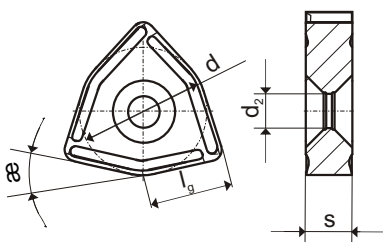
mm	d	l _g	s	d ₂	æ	max. a _p
NNGJ 2208	21,96	13,5	7,94	7,0	20°	2,5
NNGJ 2810	28,58	20,0	10,0	7,0	20°	3,0
inch	d	l _g	s	d ₂	æ	max. a _p
NNGJ 2208	0.8646	0.5315	0.3150	0.2756	20°	0.0787
NNGJ 2810	1.1252	0.7087	0.3937	0.2756	20°	0.0591

NNGZ 22...



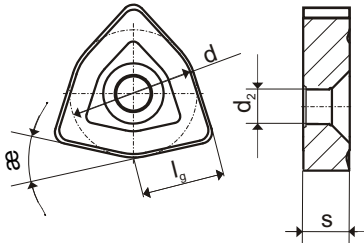
mm	d	l _g	s	d ₂	æ	max. a _p
NNGZ 2208	21,96	13,5	8,0	10,2	20°	2,5
inch	d	l _g	s	d ₂	æ	max. a _p
NNGZ 2208	0.8646	0.5315	0.3150	0.4016	20°	0.0787

HNGU 11 / HNGJ 15 / 24...



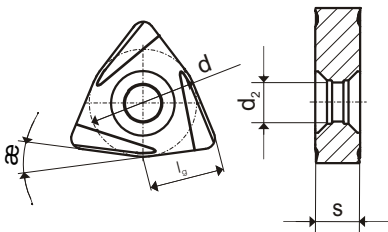
mm	d	l _g	s	d ₂	æ	max. a _p
HNGU 1106	15,88	8,0	6,35	6,75	15°	2,0
HNGJ 1508	22,23	10,0	8,0	6,0	25°	5,0
HNGJ 2413	31,75	14,0	13,0	9,1	25°	8,0
HNGJ 2414	31,75	14,0	14,0	9,1	25°	8,0
inch	d	l _g	s	d ₂	æ	max. a _p
HNGU 1106	0.6252	0.3150	0.2500	0.2657	15°	0.0787
HNGJ 1508	0.8752	0.3937	0.3150	0.2362	25°	0.1969
HNGJ 2413	1.2500	0.5512	0.5118	0.3583	25°	0.3150
HNGJ 2414	1.2500	0.5512	0.5512	0.3583	25°	0.3150

HNGH 24...



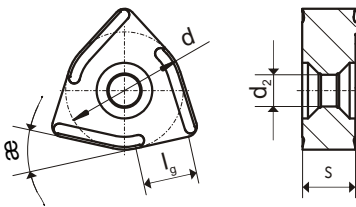
mm	d	l _g	s	d ₂	æ	max. a _p
HNGH 2414	31,75	14,0	14,0	8,4	25°	8,0
inch	d	l _g	s	d ₂	æ	max. a _p
HNGH 2414	1.2500	0.5512	0.5512	0.3307	25°	0.3150

HNGV 15...



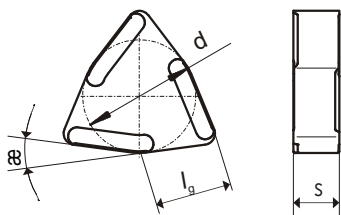
mm	d	l _g	s	d ₂	æ	max. a _p
HNGV 1510	22,23	7,0	10,0	6,0	25°	5,0
inch	d	l _g	s	d ₂	æ	max. a _p
HNGV 1510	0.8752	0.2755	0.5512	0.2362	25°	0.1968

HNGZ 15...



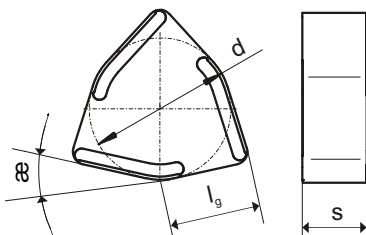
mm	d	l _g	s	d ₂	æ	max. a _p
HNGZ 1508	22,23	10,0	8,0	6,0	25°	5,0
HNGZ 1510	22,23	10,0	10,0	6,0	25°	5,0
inch	d	l _g	s	d ₂	æ	max. a _p
HNGZ 1508	0.8752	0.3937	0.3150	0.2362	25°	0.1969
HNGZ 1510	0.8752	0.3937	0.3937	0.2362	25°	0.1969

HNGF 11...

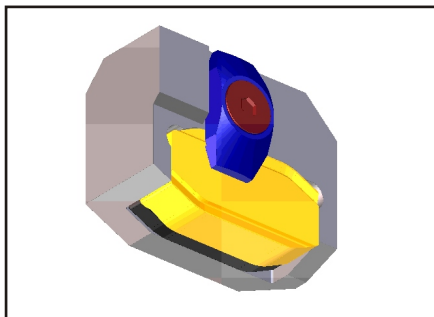
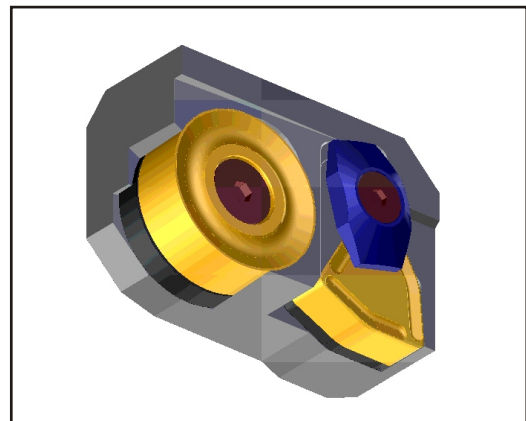
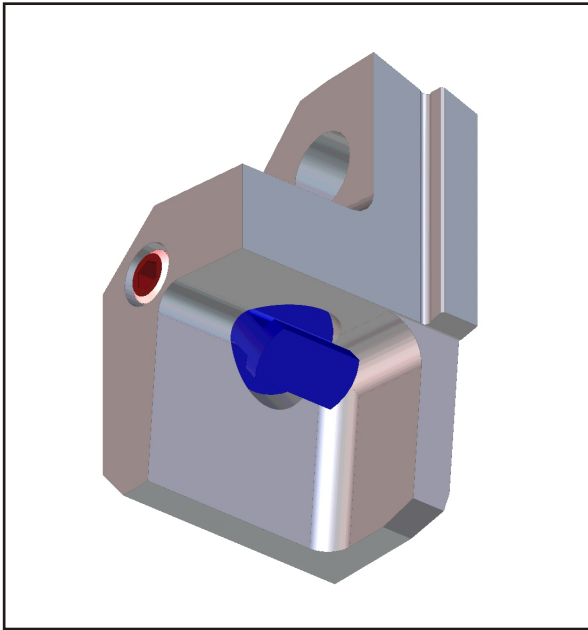


mm	d	l _g	s	æ	max. a _p
HNGF 1106	15,88	8,0	6,35	15°	2,0
inch	d	l _g	s	æ	max. a _p
HNGF 1106	0.6252	0.3150	0.2500	15°	0.0787

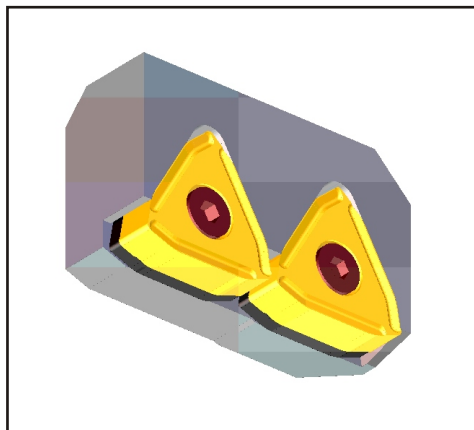
HNGF 15...



mm	d	l _g	s	æ	max. a _p
HNGF 1510	22,23	10,0	10,0	25°	5,0
inch	d	l _g	s	æ	max. a _p
HNGF 1510	0.8752	0.3937	0.3937	25°	0.1969

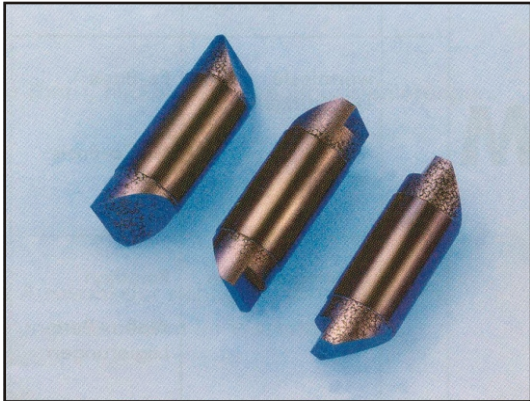


Halter und Kassetten für alle Schämaschinen auf Anfrage !
Tool holders and cartridges for all bar peeling machines on request !

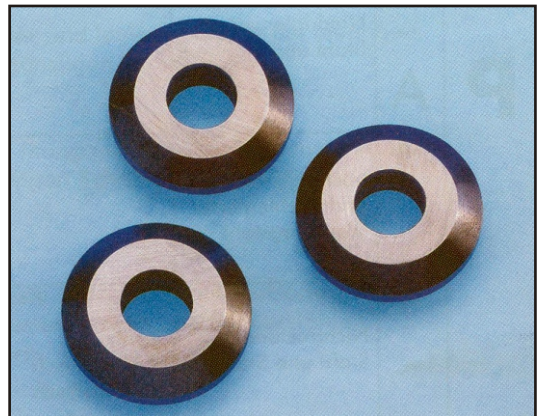


Zubehör fuer Schälmaschinen

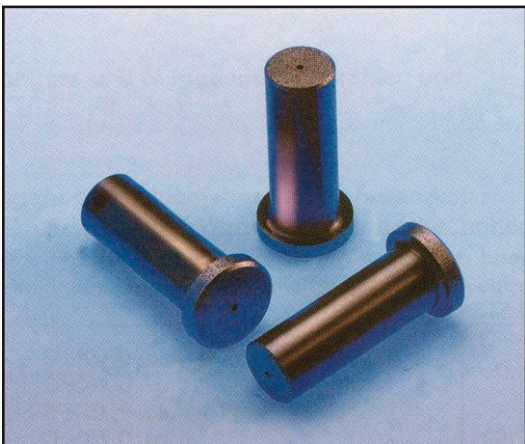
Accessories for peeling machines



Achsen / Axes

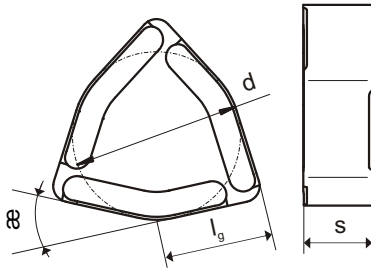


Rollen /Guiding rollers



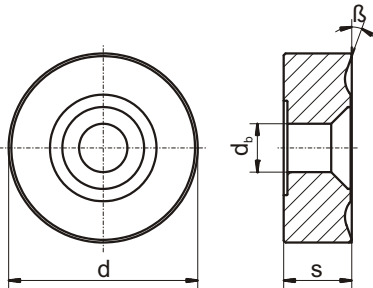
Bolzen / Pins

HNGX 15/24...



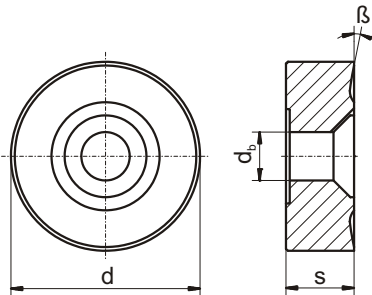
mm	d	l _g	s	æ	max. a _p
HNGX 1510	22,23	10,0	10,0	25°	5,0
HNGX 2413	31,75	14,0	13,0	25°	8,0
HNGX 2414	31,75	14,0	14,0	25°	8,0
inch	d	l _g	s	æ	max. a _p
HNGX 1510	0.8752	0.3937	0.3937	25°	0.1969
HNGX 2413	1.2500	0.5512	0.5118	25°	0.2756
HNGX 2414	1.2500	0.5512	0.5512	25°	0.2756

RNGH 20/38/50...



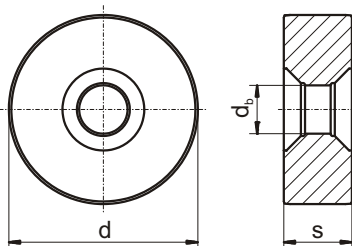
mm	d	s	d ₂	β	max. a _p
RNGH 2010	20,00	10,0	6,9	20°	4,0
RNGH 3812	38,10	12,7	12,7	20°	8,0
RNGH 5018	50,00	18,0	12,7	20°	12,0
inch	d	s	d ₂	β	max. a _p
RNGH 2010	0.7874	0.3937	0.1426	20°	0.1575
RNGH 3812	1.5000	0.5000	0.5000	20°	0.2362
RNGH 5018	1.9685	0.7087	0.5000	20°	0.3937

RNGX 38/50...

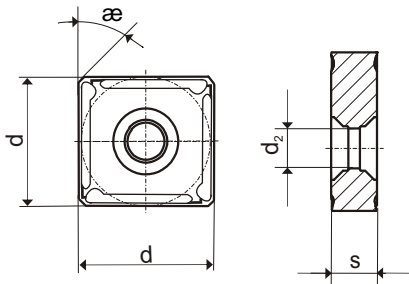


mm	d	s	d _b	β	max. a _p
RNGX 3812	38,10	12,7	12,7	18°	8,0
RNGX 5018	50,00	18,0	12,7	10°	12,0
inch	d	s	d ₂	β	max. a _p
RNGX 3812	1.5000	0.5000	0.5000	18°	0.2362
RNGX 5018	1.9685	0.7087	0.5000	10°	0.3937

RNGC 50...

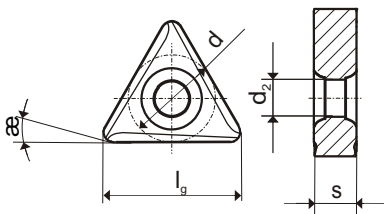


mm	d	s	d _b	max a _p
RNGC 5018	50,00	18,0	12,7	12,0
inch	d	s	d _b	max a _p
RNGC 5018	1.9685	0.7087	0.5000	0.3937



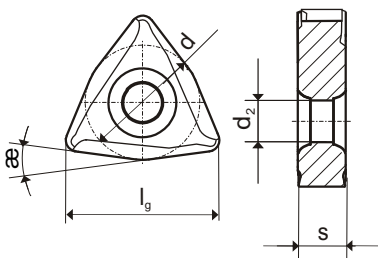
SNGJ 25...

mm	d	l_g	s	d_2	æ	max. a_p
SNGJ 2508	25,0	22,5	8,0	7,0	45°	0,85
inch	d	l_g	s	d_2	æ	max. a_p
SNGJ 2508	0.9842	0.8858	0.3150	0.2755	45°	0.033



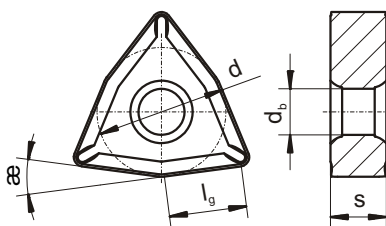
TNGC 33...

mm	d	l_g	s	d_2	æ	max. a_p
TNGC 3309	19,05	16,5	9,15	8,0	20°	1,25
inch	d	l_g	s	d_2	æ	max. a_p
TNGC 3309	0.7500	0.6370	0.3740	0.3150	20°	0.0492



WNGC 15...

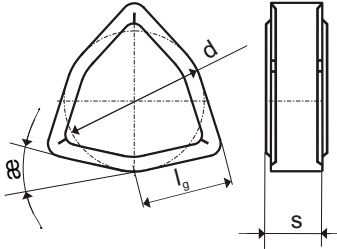
mm	d	l_g	s	d_b	æ	max. a_p
WNGC 1509	22,23	13,0	9,52	7,93	15°	4,0
inch	d	l_g	s	d_b	æ	max. a_p
WNGC 1509	0.8752	0.5118	0.3750	0.3122	15°	0.1378



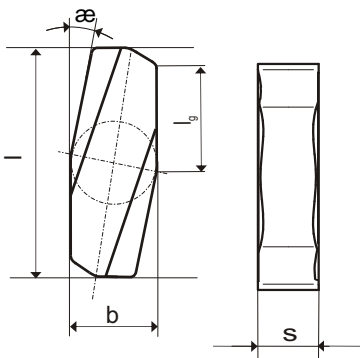
WNGG 1106 / 1509

mm	d	l_g	s	d_b	æ	max. a_p
WNGG 1106	15,88	8,0	6,35	6,75	15°	2,0
WNGG 1509	22,23	13,0	9,52	7,93	15°	4,0
inch	d	l_g	s	d_b	æ	max. a_p
WNGG 1106	0.6252	0.3150	0.2500	0.2657	15°	0.0787
WNGG 1509	0.8752	0.5118	0.3750	0.3122	15°	0.1378

WNMF 18...

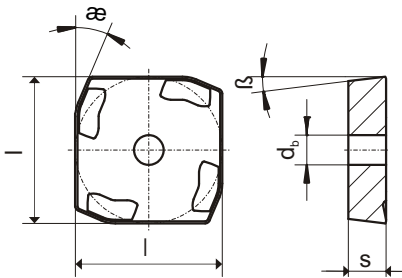


mm	d	l _g	s	æ	max. a _p
WNMF 1809	28,58	14,5	9,525	30°	8,5
inch	d	l _g	s	æ	max. a _p
WNMF 1809	1.125	0.5708	0.375	30°	0.3346



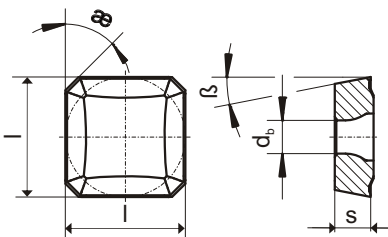
YNUX 12...

mm	l	l _g	s	æ	max. a _p
YNUX 1207	30,5	13,0	7,5	20°	5,0
inch	l	l _g	s	æ	max. a _p
YNUX 1207	1.200	0.5118	0.2953	20°	0.1968



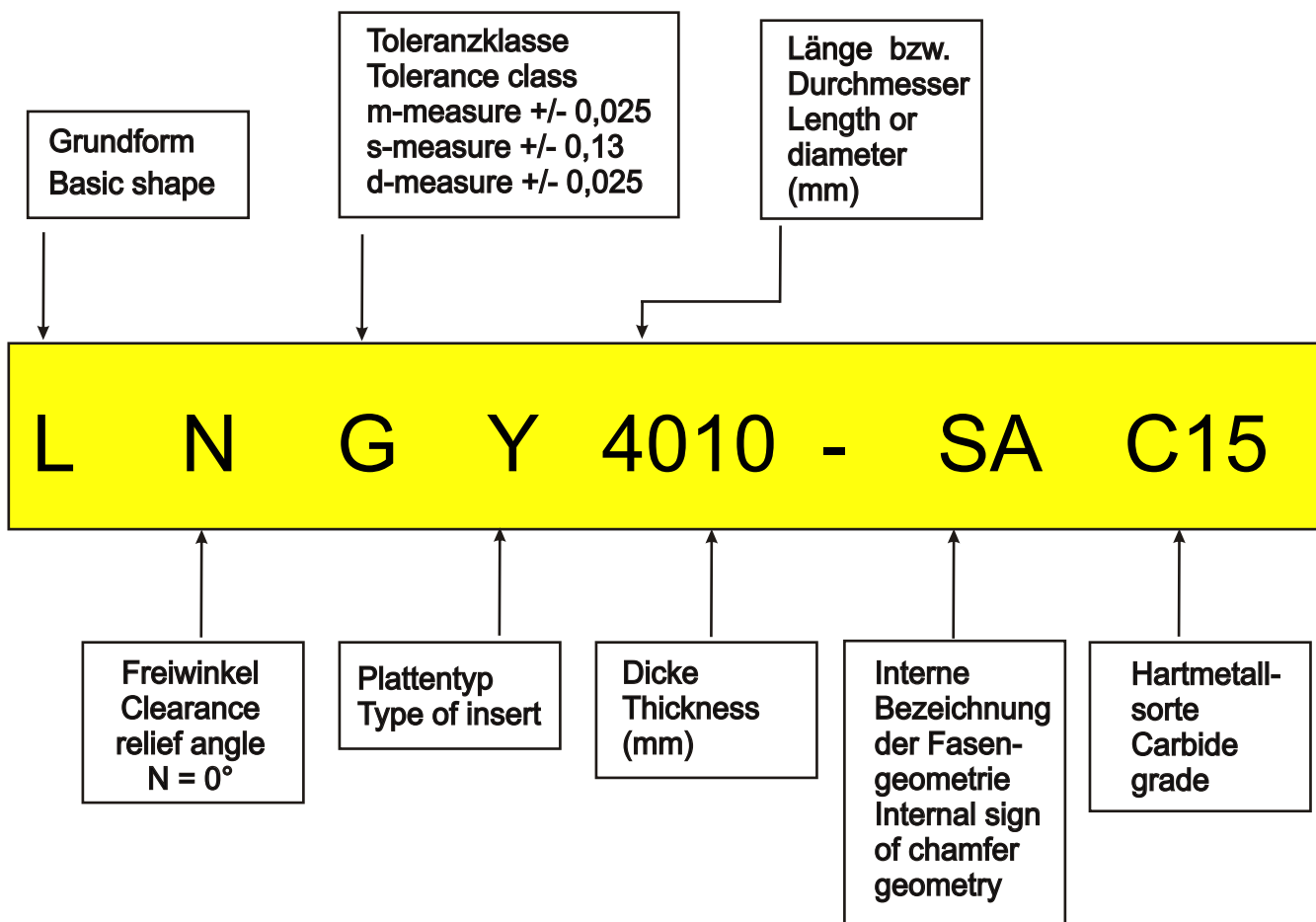
SCGT 25...

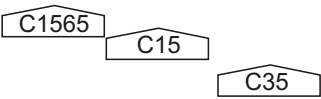
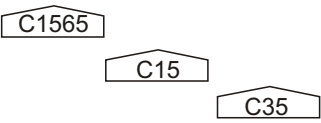

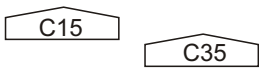



mm	l	s	d _b	æ	ß	max. a _p
SCGT 2506	24,70	6,35	5,0	23°	7°	2,0
inch	l	s	d _b	æ	ß	max. a _p
SCGT 2506	0.9724	0.2500	0.1969	23°	7°	0.0787



SPHT 15...

mm	l	s	d _b	æ	ß
SPHT 1504	15,88	4,76	4,4	45°	11°
inch	l	s	d _b	æ	ß
SPHT 1504	0.6250	0.1874	0.1732	45°	11°



Anwend.- gruppe Application group ISO 513	Werkst- gruppe Mat. group	Werkstoff- unterteilung Material classification	Werkstoffbe- schaffenheit Material nature	Werkstoffzustand Material construction	Haerte Hardness HB	Anwendungsbereich /Application range				
						05	10	20	30	40
P	A	Unleg. Stahl, Stahlguss unalloyed steel cast steel	ca. 0,15% C ca. 0,45% C ca. 0,45% C ca. 0,75% C ca. 0,75% C	geglueht, annealed geglueht, annealed verguetet quenched+tempered geglueht, annealed verguetet quenched+tempered	125 190 250 270 300					
		niedriglegierter Stahl und Stahlguss alloy-treated steel and cast steel		geglueht, annealed verguetet quenched+temperd verguetet quenched+tempered verguetet quenched+tempered	180 275 300 350					
		hochlegierter Stahl und Werkzeugstahl highly alloyed steel and highly alloyed tool steel		geglueht, annealed gehaerted und angel. hardened+tempered	200 325					
		Nichtrostender Stahl und Stahlguss Stainless steel and cast steel	ferttisch/martensitisch ferritic/martensitic martensitisch martensitic	geglueht, annealed verguetet quenched+tempered	200 240					
M	R	Nichtrostender Stahl und Stahlguss Stainless steel and cast steel	austenitisch austenitic	abgeschreckt quenched	180					
		Warmfeste Legierungen High temperature-stable alloys	Fe-Basis Ni-Co-Basis	geglueht, annealed ausgehaertet age -hardened geglueht, annealed Ausgehaertet age -hardened Gegossen, cast	200 280 250 350 320					
	S	Titanlegierungen Titan Alloys	Reintitan Pure Titanium Alpha+Beta-Leg. Alpha+Beta- Alloys	ausgehaertet age -hardened	400 Mpa 1050 MPa					

C1565 P10; M10 Verschleissfeste Sorte zum Schälen von unlegierten und legierten, Mangan- und Manganaustenit- und pulvermetallurgischen Stählen.
High wear resistance grade for peeling of unalloyed and alloyed, manganese and manganese austenetic and powder metallurgical steel

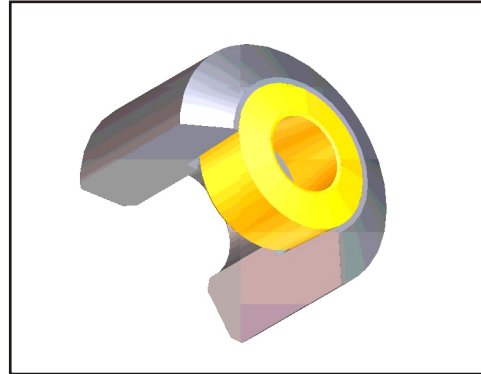
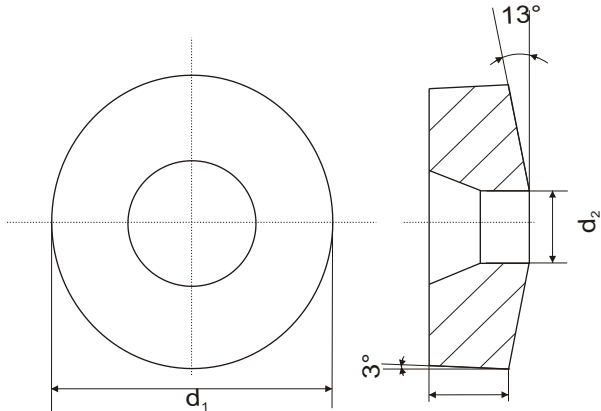
C15 P15 - P25 Universalsorte zum Schälen legierter und hochlegierter Stähle, Werkzeugstähle, Verguetungs-, Kalt- und Warmarbeitsstähle
Zugfestigkeit: 800 - 1300 MPa
Universal grade for peeling of alloyed and high-alloyed steel, especially tool steel, tempering steel and cold and hot working steel in ranges of high cutting speed.
Tensile strenght : 800 - 1300 MPa.

C35 P30 - P40 Zähle Sorte zum Schälen unlegierter und legierter Stähle bei niedrigen Schnittgeschwindigkeiten.
Tought grade for peeling of unalloyed and alloyed steel at low cutting speeds and unfavourable conditions.

C4025 M40 Hochzähle Sorte zum Schälen von Manganstählen bei grossen Durchmesserabnahmen.
Hight tough grade for turning of manganese and manganese-austenitic as well as high temperature stable alloys at low cutting speeds and large diameters

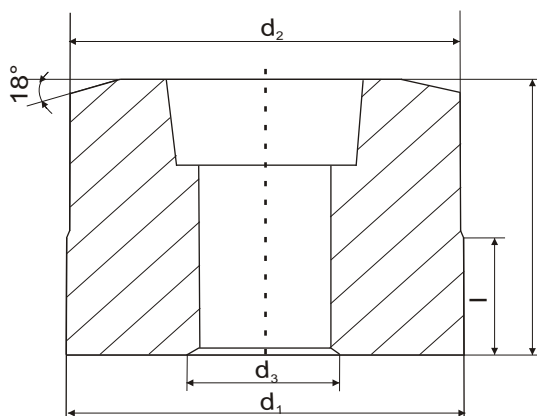
C1045 M20 Schneidkantenstabile Sorte zum Schälen kohlenstoffarmer Stähle, austenitischen und Duplexstählen.
Cutting edge stable, wear resistant universal carbide grade for turning of low carbon austenitic and ferritic-austenitic steel
Tensile strenght : 400 - 800 MPa, Hardness : 240 HB.

Schälstein-Einsätze / Wire shaving tools



$\varnothing d_1$ mm	h mm	$\varnothing d_2^{+0,02}$ mm
20,0	10,0	4,5 ... 10,0 gestuft in 0,05 mm Bereichen graded in 0.05 mm ranges
24,0	12,0	10,0 ... 12,0 gestuft in 0,05 mm Bereichen graded in 0.05 mm ranges

Fassung /Casing



Kern- \varnothing mm	$\varnothing d_1$ mm	$\varnothing d_2$ mm	$\varnothing d_3$ mm	h mm	l mm
20,0	40,0	39,8	14,0	28,8	10,0
24,0	40,0	39,8	16,0	24,6	10,0

Tribo Hartmetall GmbH
Am Bahnhof 28
D-36433 Immelborn
www.tribo.de

Produktbereich Schälwerkzeuge /
sales department for bar peeling tools

Reinhard Rose
Tel. +49 (0) 3695 681 240
Fax. +49 (0) 3695 681 249
e-mail r.rose@tribo.de

Margit Messerschmidt
Tel. +49 (0) 3695 681 241
Fax. +49 (0) 3695 681 249
e-mail m.messerschmidt@tribo.de

Jens Schubert
Tel. +49 (0) 3695 681 242
Fax. +49 (0) 3695 681 249
e-mail j.schubert@tribo.de